



GROUND PENETRATING RADAR

# RD1000<sup>TM</sup>+ Ground Penetrating Radar

PORTABLE RUGGED GPR FOR THE UTILITY INDUSTRY



 Radiodetection<sup>®</sup>



### LOCATE MODE

Simply reverse the RD1000+ to enter Locate mode and establish the position and depth of a buried utility.



### INTUITIVE OPERATION

Advanced features accessed with straightforward controls and menus.



### PORTABLE

Breaks down for easy transportation and can be assembled on-site in less than 2 minutes. Case options protect the system during shipment.

## RD1000+ Utility GPR

The RD1000+ Ground Penetrating Radar is a powerful complement to Radiodetection's electromagnetic locators, enabling operators to detect non-conductive pipes and ducts, and to position multiple utilities in context to one another with a single pass.

Featuring an advanced radar sensor and powerful digital image processing, the RD1000+ can detect buried infrastructure and voids at depths of up to 8 m (27').

### LOCATE AND MARK UTILITIES

Specifically designed for the subsurface utility industry, the RD1000+ provides operators with a quick and accurate data set designed to make surveys faster. Once a utility is detected, the operator can simply reverse the cart to switch the RD1000+ into Locate Mode and determine the utility's depth and position.

The RD1000+'s high-contrast LCD enables operators to easily locate buried utilities. Contrast and gain controls alongside advanced filtering tools simplify detection of even small cross section utilities in the context of differing subsurface materials and soil types.

### INTUITIVE AND ERGONOMIC TO USE

The RD1000+ is mounted in a non-metallic cart designed for easy handling over terrain and comfortable use during lengthy surveys. The waterproofed keypad and intuitive menu system provides operators with easy access to the advanced digital features of the RD1000+.

### RECORD MANAGEMENT

The RD1000+ features one-touch image capture to assist in documenting surveys. Locate images are saved to standard Compact Flash cards, which can be removed from the system to allow the files to be transferred to a PC.

The RD1000+'s ImageView software allows operators to view and export RD1000+ image files for use in reports and business databases.

The Compact Flash card interface also allows users to update the RD1000+ software as upgrades are made available.

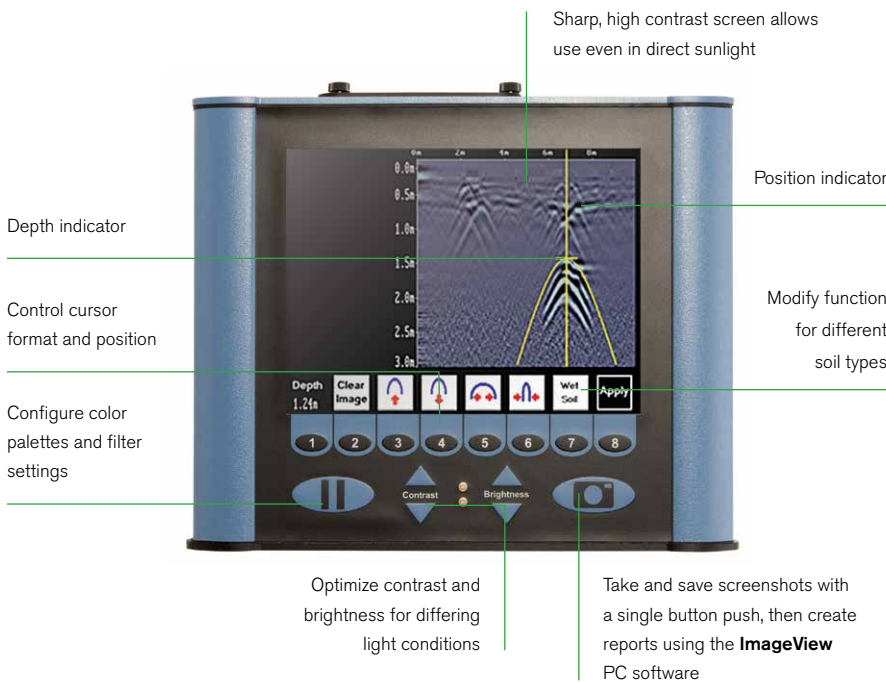
### PORTABLE AND DURABLE

Built from durable, weatherproof materials, and supported by a range of wheel types and accessories, the RD1000+ can operate in almost any terrain. The modular design also makes the system quick to service and repair.

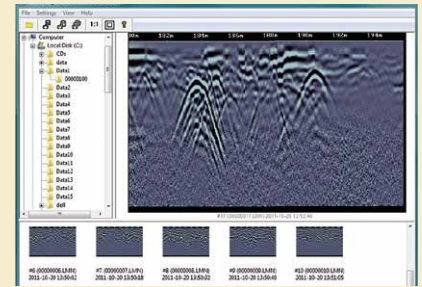
The RD1000+ can be broken down for shipment or storage, and re-assembled on-site in less than two minutes. Weighing only 22 kg (48lbs), the system is designed to be transported and assembled without requiring specialist equipment.

Key components can be packed in hard or soft travel cases, and a flight case is also available to protect an entire system during transportation.

# RD1000+ display and controls



- High contrast real time display provides clear instant updates in almost any light condition
- Multi-language and non-lingual icon support



**IMAGEVIEW SOFTWARE**  
 Enables operators to retrieve and manipulate images tagged with distance and cursor readouts from the RD1000+ to create detailed survey reports.



**ERGONOMIC DESIGN**  
 Comfortable to use and handle across terrain; and over lengthy survey periods.

RD1000+ SYSTEM SPECIFICATIONS	
Dimensions (H x W x D)	115 cm x 70 cm x 90 cm 45.3" x 27.6" x 35.4"
Weight	22 kg (48lbs)
Sensor frequency	250 MHz
Antennas	Ultra-Wide Bandwidth (UWB)
Sampling	Digital Equivalent Time Sampling (DETS) – real time/stop-start capability
Signal Enhancement	DynaQ, optimized to cart speed
Signal compensation	Temperature / input voltage
Screen	7.25" color LCD, daylight optimized
Image export format	.gpr
Cart material	Non-metallic
Battery	12V, 9Ah Lead Acid, mounted on-board
Environmental protection	IP66
Operating / storage temperature rating	Sensor: -40°C to +50°C / -40°F to 122°F Display: -5°C to +50°C / -58°F to +122°F
Spatial interval	5 cm / 2"
Depth range	Up to 8m / 27' maximum*
Display depth scale	1 m - 8 m / 3' - 30'
Memory: Capacity Type	16 GB standard, 64 GB maximum Compact Flash, removable
Compliance	CE, ROHS, FCC
Standard warranty	1 year
Languages supported	Non-lingual icons, English, Chinese (simplified) Spanish, French, Dutch, German, Arabic, Turkish, Russian, Czech, Polish

\*Ground conditions dependent

**DIGITAL SIGNAL ENHANCEMENT**  
 DynaQ signal processing optimizes sensor readouts based on the cart speed, providing real-time image updates and enhanced resolution. Use digital gain, filters and color palettes to clarify readings and filter out interference and ground layers.

# RD1000+ Accessory System

A comprehensive range of accessories complement the RD1000+, broadening its application range, and to provide extra protection during transport.

The product's modular design also allows for replacement of a number of the key component parts without requiring specialist tools.

## WHEEL SETS

Large wheel set for use on rough or uneven terrain

**Part No: 10/RD1000LGWHEELS**



Set of four replacement standard wheels

**Part No: 10/RD1000WHEELSET**

## TRANSPORT OPTIONS

Hard case for display unit

**Part No: 10/RD1000DISPLAYCASE**



Soft case for display unit

**Part No: 10/RD1000+DISPBAG**

Flight case for complete RD1000+ system

**Part No: 10/RD1000FLIGHTCASE**



## SOFTWARE



Additional licence for RD1000+ GPR Image View Software

**Part No: 10/RD1000+SOFTWARE**

## REPLACEMENT PARTS

RD1000+ GPR sensor assembly

**Part No: 10/RD1000+SENSOR**



Replacement sensor skid pad

**Part No: 10/RD1000SKIDPAD**

RD1000+ GPR display assembly

**Part No: 10/RD1000+DISPLAY**



Display mount assembly

**Part No: 10/RD1KMOUNT**



RD1000+ GPR cart handle assembly

**Part No: 10/RD1000+HANDLE**



RD1000+ GPR cart base assembly

**Part No: 10/RD1000+CART**

RD1000+ replacement battery pack

**Part No: 10/RD1000+BATTERY**



Battery Charger – 100V-240V for global use

**Part No: 10/RD1KCHARGE**



Mains leads for battery charger

**Part numbers:**

**US / CAN type: 04/MC-1020**

**European type: 04/MC-3020**

**UK type: 04/MC-5020**

**Australia type: 17/GP3071-C13-25-BK-10A-I**



Battery connection cable

**Part No: 10/RD1KBATTCABLE**



Display to sensor connection cable

**Part No: 10/RD1KDISPCABLE**



Odometer assembly & cable

**Part No: 10/RD1KODOMETER**



Battery Strap

**Part No: 10/RD1KBATTSTRAP**



Sensor support strap

**Part No: 10/RD1KSTRAP**

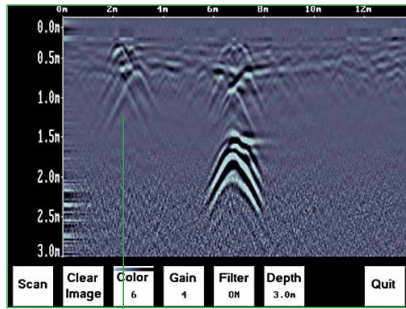


Cart assembly pins × 2

**Part No: 10/RD1KPIN**



# RD1000+ key features



Advanced on-board filtering enables operators to identify small or shallow utilities

Non-metallic cart breaks down without tools for easy transportation

Light weight, ruggedized and weatherproof system designed for use across terrain

Compact Flash card for data storage and transfer

Large, bright, real-time display optimized for use in daylight

Intuitive one-touch controls

Ergonomic, manoeuvrable design for comfortable use

Long-life battery allows for extended periods of use

Advanced wide-band 250MHz GPR sensor allows accurate surveys utilities buried up to 8m / 27' deep\*

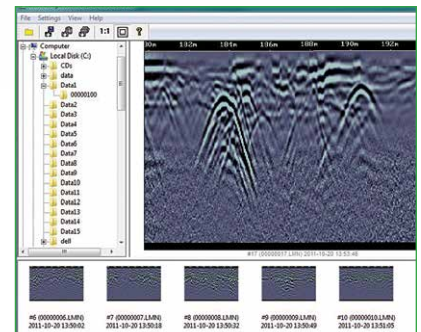
Integrated odometer provides automatic distance measurement for surveys and mapping



Large wheel option for use on rough or uneven terrain

## RD1000+ GPR ImageView

Use the dedicated GPR ImageView software to extract screen capture images for use in analysis and survey reports



\*Ground conditions dependent